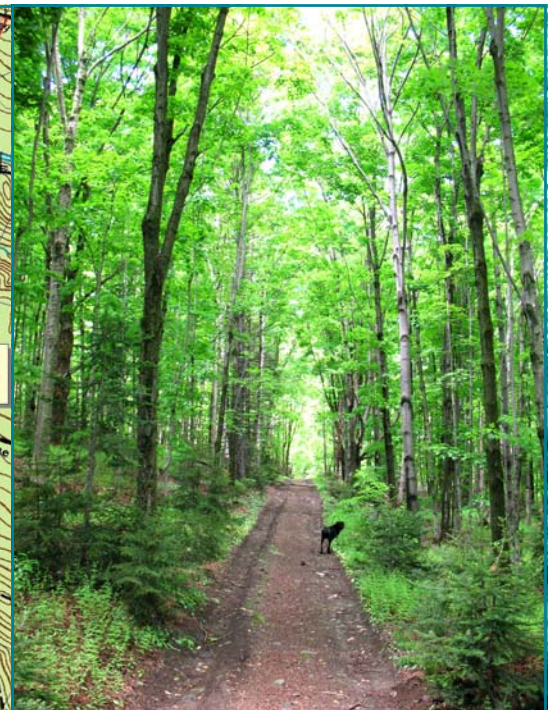
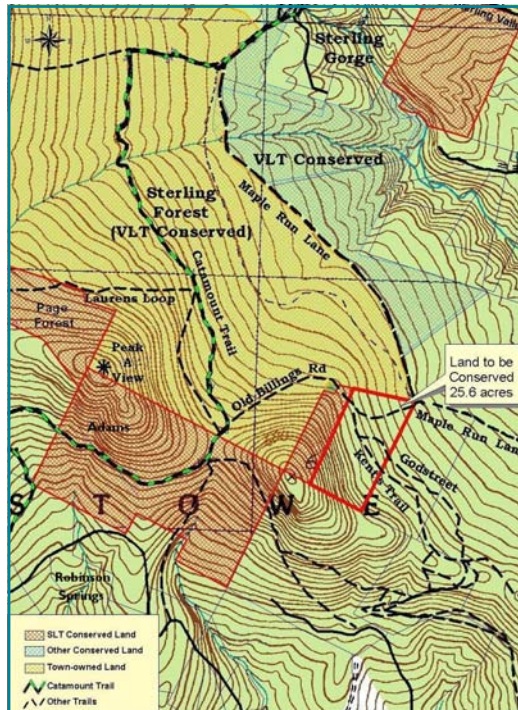


## SLT Launches Maple Run Lane Project



The Old Billings Road (photo, right), located just off Maple Run Lane bi-sections the property to be conserved. SLT will purchase the 25.6 acre property for well-under the appraised value and donate the land to the Town of Stowe. It will be managed as part of Sterling Town Forest. A conservation easement will prohibit future development and keep the property open to the public.

### IN THIS ISSUE:

Help Save the Trails at Maple Run	1
Message from the Executive Director and President	2
9th Annual Golf Tournament and Calcutta	3
Membership News	4
Public Comment Period Now Open	5
Stewardship Matters: Tending Your Turf	6
Naturalist Corner	7

**S**terling Forest is an incredible resource for the Town of Stowe. The forest provides countless opportunities for recreation and generates income for the town through periodic timber harvests. Can we have too much of a good thing? In this case, we think not!

Stowe Land Trust has entered into a purchase and sale agreement that will secure an additional 25.6 acres for the town forest. More than likely, if you've hiked, biked, hunted or skied in the forest, you've been on this land—and you probably thought it was already protected. The property begins where the Old Billings Road leaves Maple Run Lane, and continues nearly to Tucker's Restaurant—a privately owned hunting camp (the land

surrounding the camp was conserved by SLT in 2001). The property also contains sections of the popular mountain biking trails, Godstreet and Kent's Trail.

SLT is well on its way to raising the \$161,000 needed to complete this project. In April, the Vermont Housing and Conservation Board (VHCB) granted SLT \$106,000 leaving SLT \$55,000 to raise locally through grants and generous donor contributions.

Working closely with the Stowe Mountain Bike Club SLT will begin fundraising soon! Look for more information coming to you in the mail and on our website [www.stowelandtrust.org](http://www.stowelandtrust.org). Please consider supporting the Maple Run Lane project!



SLT is working with the Stowe Mountain Bike Club to purchase and protect the Maple Run Lane property. If you ride, please consider making a donation to SLT to help secure the trails at Maple Run Lane. Thank you!

*"Question. Stand. Speak. Act"*  
*- Terry Tempest Williams*

#### **Board of Directors**

Gaetano Vicinelli, Chair  
Elaine Nichols, Vice Chair  
Alan Thorndike, Secretary  
David Jaqua, Treasurer  
Charlie Berry  
Billy Coster  
Kevin D'Arcy  
Leslie Gauff  
Gerry Griffin  
Harry Hunt  
Tom Jackman  
Cliff Johnson  
Dyeanne Racette  
Ashley Sargent  
Peggy Smith  
Michael Snyder  
Elizabeth Squier  
Andrew Woods

#### **Directors Emeritus**

Trowbridge Elliman  
John McVickar  
John Merrill  
Merton Pike  
George Stearns

#### **Executive Director**

Heather Furman

#### **Assistant Director**

Rebecca Washburn

#### **Administrative Assistant**

Erin Bruhns



PO Box 284  
Stowe, VT 05672  
802-253-7221  
802-253-2642 (fax)  
[www.stowelandtrust.org](http://www.stowelandtrust.org)  
[info@stowelandtrust.org](mailto:info@stowelandtrust.org)

*Stowe Land Trust is dedicated to the conservation of scenic, recreational, and productive farm and forest lands for the benefit of the greater Stowe community.*

*All contributions to Stowe Land Trust are tax deductible. Please become a member today.*

Summer is here - the gardens have been planted and school is out, which means it is time to get outside and play. And enhancing recreational opportunities is one reason why we are so excited to announce our newest conservation effort to protect the Maple Run Lane property (cover). By conserving this property, popular hiking and biking trails that have been used by the public for decades will be permanently protected! SLT has already secured two-thirds of the project costs and with your help, we will be on our way to completing our 27th conservation initiative!

Earlier this spring SLT completed a project to protect nearly half a mile of the Little River. Healthy riparian (river) habitats play an important role in supporting healthy ecosystems (see Naturalist Corner, pg. 8). SLT wishes to thank Darrow Mansfield, Jeff and Karen Nicholson, Kirsten Alexander and Shauna Larson for their patience and commitment in helping us conserve this important stretch of the river.

While summer is just beginning. SLT has already been outside sprucing up the trails

## **From the Executive Director and Board Chair**

at Wiessner Woods, hosting a bird-walk at Pinnacle Meadow, and preparing for our increasingly popular Invitational



Golf Tournament. We've also hosted our first annual Green Flea Market that raised over \$3000 and gave vendors a chance to showcase their wares. Steve Berson and Cindy Allen-Berson deserve our most sincere thanks for hosting the Benefit Bake for the second year in a row, and donating 100% of their pizza sales. Thank you to all those who came to eat pizza on May 15th.

Summer is fleeting, so get out for a hike at Wiessner Woods, ride through the forest on Maple Run Lane, join us on the links at our annual golf tournament, or take a moment to sit quietly beside a rushing stream and reflect on the beauty of the land that surrounds us right here in Stowe.



## **SLT Completes River Corridor Easement**

Stowe Land Trust closed on a river corridor conservation easement on April 30, 2008 to protect over 2,000 feet of Little River frontage in Stowe's lower village. This conservation easement will protect the river corridor and surrounding agricultural lands through the purchase of the development rights as well as river channel intervention rights. Purchasing these rights ensures the Little River will have the freedom to access its floodplain, maintain equilibrium, and help prevent devastating floods that result from inappropriate development.

# Stowe Land Trust's 9th Annual Invitational Golf Tournament and Calcutta Social



**Wednesday, August 6<sup>th</sup>, 2008**

**Calcutta Social 6:00 – 7:30 PM**

**Generously hosted by  
the Commodores Inn**

We invite you to join your fellow golfers, teammates and Stowe Land Trust supporters at our annual Calcutta Social.

Enjoy complimentary hors d'oeuvres and a cash bar while getting a sneak peek at the team pairings. The Calcutta will give you the chance to place a bid on your favorite team and maybe win big! John Merrill will be "auctioning" the teams in what promises to be an entertaining evening.

The Calcutta Social is \$25 per person for those not registered to play in the tournament.

Each registered golfer in attendance will receive a free mulligan for his or her use the following day.



Debbi and Per Larsen enjoy an evening at the Calcutta Social.



Dave Bennett, Golf Pro at Spruce Peak at Stowe prepares for a little "yoga golf"

**Thursday, August 7<sup>th</sup>, 2008**

**West Hill Golf Course**

**Tournament Registration at 11:00 am**

**Shotgun Start at Noon**

**Reception to follow from 5:30 to 7:30 pm**

Now in its ninth year, the SLT golf tournament is more fun than ever! As in the past, the course will be played in an 18 hole scramble format, with four person teams selected by the SLT Golf Committee. The entry fee is \$175 per golfer.

Free cocktails, hors d'oeuvres, a golf demonstration by Dave Bennett and an award ceremony will follow the match. Please join us for the reception even if you won't be playing golf. The reception is only \$25 per person for those not playing in the tournament.

For those who haven't played before, this is a spectacular opportunity to play the private West Hill course—a stunning 9 hole course. This event helps support Stowe Land Trust's mission to conserve our community's natural beauty. We look forward to seeing you on the links!



The stunning West Hill Golf Course.

**Thank You to Stowe Land Trust's Golf Committee!**

**John Douglas, Chair  
Dave Bennett  
Charlie Berry  
Trowbridge Elliman  
Leslie Gauff**

**Cliff Johnson  
John Merrill  
Jack Patten  
Lee Spencer  
Gaetano Vicinelli**

## “Pie in the Sky” Benefit Bake: A Stowe Community Success Story

For the second year in a row, the “Pie in the Sky” Benefit Bake proved to be a success story the Stowe community can be proud of. Steve Berson and Cindy-Allen Berson, owners of “Pie in the Sky” hold the Benefit Bake each year to commemorate the lighting of their brick pizza oven. By generously donating 100% of the entire day’s pizza sales, this event raised over \$2,000 for Stowe Land Trust!

SLT supporters and people hungry for pizza showed up in remarkable numbers for the Benefit Bake this year. Cindy observed that there were a lot of familiar faces demonstrating that residents “overwhelmingly support the mission of the land trust.” Steve and Cindy have shown leadership and creativity in the business community by supporting a local cause and making it easy for everyone to support land conservation efforts.

Steve and Cindy deserve a huge thank you, along with their hard working kitchen, wait and hosting staff. Stowe Land Trust would also like to thank everyone who came out to eat pizza and contributed to a tremendously successful day for land conservation.



Plenty of pies were eaten on May 15th at Pie in the Sky’s annual Benefit Bake which supported Stowe Land Trust for the second year in a row!

## SLT’s Green Flea Market

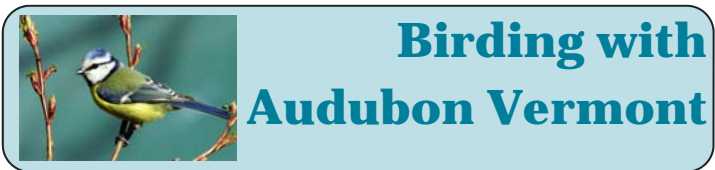
The day started at 6AM for flea market volunteers and many vendors as well. Putting up signs and packing cars with treasures you hope will not be making the return trip to your home. It wasn’t long before the first shoppers were lining up out front craning their necks to get a sneak peek at the merchandise.



Stowe Land Trust’s first green flea market proved to be a fun event with friends, neighbors and local businesses selling their treasures. Eager shoppers were leaving with a wide array of great finds including

goggles, eclectic furniture, a brand new fajita maker and whimsical table lamps.

The success of this event was due in large part to the support of local residents who bought and sold their treasures and businesses that provided us with great food. In addition to good food, the day was made festive with musical entertainment from Stowe resident, Jeff Nicholson. Business supporters included: The Bagel Co., Cold Hollow Cider Mill, Green Goddess Café, Green Mountain Coffee Roasters, Hannaford, Healthy Living, Jamie’s on Main, Mac’s Market, McKenzie of VT, Picasso, Stowe Dogs and Shaw’s Supermarket.



## Birding with Audubon Vermont



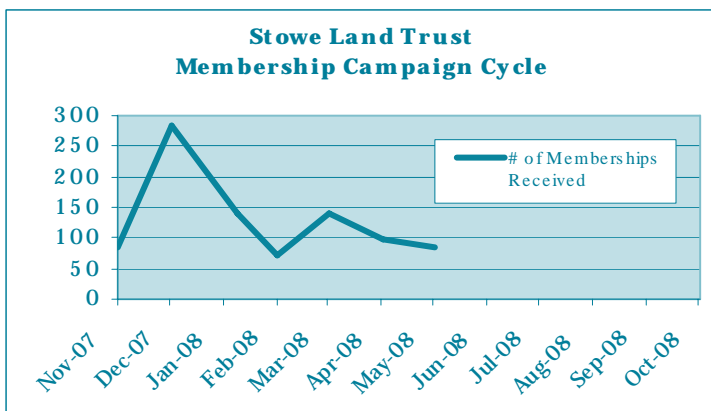
Novice and advanced bird enthusiasts spent the morning of May 10th with Jim Shallow of Audubon Vermont and SLT’s Becca Washburn searching for exciting species atop Pinnacle Meadow. The bird watchers saw several birds including a Dark-eyed Junco, Black-throated Blue Warbler, Chestnut sided Warbler and Ovenbird. SLT benefits greatly from its partnership with Audubon Vermont. With their expertise, we are able to bring our members a unique chance to explore wildlife habitats on our conserved lands. We hope you will join us next year!



# Membership Update

Stowe Land Trust membership corresponds with the calendar year. By joining early, SLT supporters can make the most of their membership benefits and save Stowe Land Trust money in postage and mailings. Your membership benefits include: the quarterly newsletter *Mountain Views*, direct notification of our events and workshops, and the satisfaction of having helped conserve our natural landscape. Your contribution is recognized in the winter newsletter at the end of the membership year.

Membership dues received after November 1, are applied to the following member year. As of the end of May, over 900 people have shown their support for land conservation in our community by becoming a member of Stowe Land Trust.



**Save the Date!**  
**Framing Our Future:**  
**Annual Meeting and**  
**Art Auction**

**Saturday, November 1, 2008**  
**Stoweflake**  
**Mountain Resort and Spa**

Plan to join us at our 21st annual meeting to share the excitement and celebrate Stowe Land Trust's accomplishments during 2008. Show your support for conservation by attending the art auction following annual meeting.

**Tickets and more information for the art auction will be available soon.**

## National Land Trust Accreditation: Public Comment Period Now Open

The land trust accreditation program recognizes land conservation organizations that meet national quality standards for protecting important natural places and working land forever. Stowe Land Trust is pleased to announce that it will be submitting a full application for accreditation on August 1, 2008. A public comment period is now open.

Applicants for land trust accreditation undergo an extensive review of their policies and programs. Accredited land trusts may display a seal indicating to the public that they meet national standards for excellence, uphold public trust and ensure that conservation efforts are permanent.

The Land Trust Accreditation Commission, an independent program of the Land Trust Alliance, invites public input and accepts signed, written comments on pending applications. Comments must relate to how Stowe Land Trust complies with national quality standards. These standards address the ethical and

technical operation of a land trust. For the full list of standards please visit [www.landtrustaccreditation.org/getting-accredited/2008-indicator-practices](http://www.landtrustaccreditation.org/getting-accredited/2008-indicator-practices).

Comments may be submitted via the web by visiting <http://www.landtrustaccreditation.org/current-applicants/action-public-comment>.

Comments may also be faxed or mailed to:  
Land Trust Accreditation Commission  
Attn: Public Comments  
12 Spring St. Suite 204  
Saratoga Springs, NY 12866  
Fax: 518.587.3183

Written comments on Stowe Land Trust's application will be most useful before September 15, 2008. To learn more about the accreditation program, visit [www.landtrustaccreditation.org](http://www.landtrustaccreditation.org)

**Thank you for your assistance.**

# Tending Your Turf: Summer Lawn Care Tips

**R**ich, green expanses of lawn are a source of pride in many New England neighborhoods. The maintenance of which people approach with varying degrees of zeal. Here are several lawn care tips that will appeal to homeowners regardless of how much energy they devote to lawn care. By following some of these guidelines, homeowners keep themselves and their family healthy as well as Vermont's wildlife, water quality and forests, while making good budget sense.



## Reduce the Size of Your Lawn

Homeowners will save money and time on lawn maintenance and increase the diversity of their of their yard by decreasing lawn size.



## Maintain Riparian Buffers

If your yard includes waterfront, consider maintaining a buffer of native trees, shrubs and other woody vegetation rather than mowing directly to the water's edge. Buffer strips effectively filter run-off from driveways and lawns as well as provide important fish and wildlife habitat and prevent shoreline erosion.



## Choose Native Plants

Consult your local nursery for advice when selecting plants for your yard. Using plants well suited to your site will reduce the amount of maintenance necessary to keep your gardens attractive and healthy.



## Test Your Soils

Soil testing will indicate what if any nutrients are needed to keep your lawn healthy. If you choose to use fertilizers, use the smallest amount possible and avoid using any containing phosphorous unless necessary. Contact your local soil conservation district for more information and test kits.



## Avoid Using Pesticides & Herbicides

Pesticides and herbicides must be used with great care to avoid impacts to the health of humans, animals, and the environment. Disadvantages of use include their toxicity to some humans, animals, and useful plants, and the persistence of some of these chemicals in the environment.



## Raise the Mower Blade

Mowing lawns too short or using dull mower blades increases susceptibility to stresses caused by drought, disease and pests and requires more treatment by fertilizers and other harmful chemicals. Leave grass clippings as natural fertilizer to be recycled back into the lawn.



## Many Hands Make Light Work!

**O**n Saturday, June 7th, volunteers joined SLT staff at Wiessner Woods for the annual work day to commemorate National Trails Day. For nearly two decades SLT supporters and trail users have gotten together in the spring to maintain the popular Wiessner Woods trail system.

In addition to regular trail maintenance activities, several sections of new puncheon were installed in a notoriously wet stretch of the Hardwood Ridge Trail. Seasoned trail maintenance volunteers were joined this year by several new strong backs and helping hands! Thanks to the Green Mountain Club we were well equipped with the proper tools for a job well done. Volunteers were rewarded with hearty lunches of sandwiches and cookies provided by Edelweiss Country Store.

**Thanks again to our volunteers and supporters!**

## Funding for Conservation Restored!

Stowe Land Trust would like to thank the Vermont Legislators who stood firmly in support of funding for the VT Housing Conservation Board. Particularly, Senator Susan Bartlett, Chair of the Senate Appropriations Committee, who has consistently supported this critical funding source for conservation.



**H**emlock branches drape low over the water. A Hermit Thrush's song can be heard above the sound of water cascading over rocks on its long route from the mountains to Lake Champlain. Tracks on the bank reveal a deer passed by and a few birds have been scavenging for insects. A dark outline appears on the water's surface as a Belted Kingfisher glides downstream, its chattering call echoes off the surrounding landscape. Sitting quietly at the water's edge, silent observers can be rewarded with experiences that speak to the diversity of river and stream corridors.



food source for numerous mammals and birds. The Belted Kingfisher, for instance, carries out its entire life cycle within this forest corridor.

A walk through the woods at SLT conserved properties such as Mill Trail and Bingham Falls will bring you to the banks of the West Branch of the Little River, a prominent natural feature in Stowe. By turning over a few rocks in the stream you might find insect larvae (pictured below) feeding on microscopic organisms flowing downstream. The forest surrounding the West Branch is a also a great place to listen for our state bird the Hermit Thrush's flute-like song. Perhaps one of your excursions this summer will bring you to the water's edge for an awe-inspiring encounter with the natural world.

Plant and animal communities found adjacent to rivers and streams are distinct and interact in ways that exemplify an eco-system. Forested corridors surrounding rivers and streams can be considered the hub of the natural world where relationships in an eco-system can easily be witnessed and recognized for the larger part they play in maintaining a healthy balance.



Consider the benefits of the overhanging forest. By shading the river it maintains cool temperatures for aquatic animal and plant species and prevents growth of algae. Woody debris functions as the origin of the energy that feeds this system (just as photosynthesis is critical to our survival). Organic matter provides food and cover for aquatic insects and fish which serve as a



## George K. Stearns *Celebrating a Life of Wisdom and Generosity*



**F**ounding Stowe Land Trust director George Stearns died in his home in Stowe surrounded by friends and family on Sunday, April 6th. A well-known attorney who practiced in Stowe for over three decades, George was also a passionate community leader and conservationist. During the 20 years that he was a part of SLT, George played critical role in the evolution of our organization. He provided advice and guidance to both board and staff, many of whom came to rely on his deep understanding of real estate law and his unique ability to speak on behalf of conservation for the benefit of all the citizens of Stowe. George leaves a legacy of protected lands that will always play a part in enhancing the beauty of Stowe. He is dearly missed by everyone whose life he touched through his commitment, profound wisdom and generosity.



Clockwise from top: SLT members at the Pinnacle Meadow bird walk, Skylar Larson sampling the merchandise at the Green Flea Market, and Pie in the Sky staff prep pies for the Benefit Bake in support of Stowe Land Trust.

Mountain Views is published quarterly by Stowe Land Trust as a benefit to its members.

Stowe Land Trust is a membership supported 501(c)(3) non-profit organization dedicated to the conservation of scenic, recreational, and productive farm and forest lands for the benefit of the greater Stowe community. All contributions are tax deductible to the extent allowed by law.



P.O. Box 284  
Stowe, VT 05672  
(802) 253-7221  
Fax (802) 253-2642  
[www.stowelandtrust.org](http://www.stowelandtrust.org)

**SLT thanks these local businesses for their ongoing support!**



**CARLSON**  
REAL ESTATE  
On the corner of Main



**NON-PROFIT ORG.**  
**U.S. POSTAGE**  
**PAID**  
**STOWE, VT**  
**PERMIT NO. 30**